



14 High Street

Dorchester, DT2 8WY

£1,100 PCM



A well presented two DOUBLE BEDROOM, ground floor apartment located in the desirable village of Puddletown, Dorset, available to let on a LONG TERM basis. The property benefits from DRIVEWAY parking for TWO CARS.

The property offers spacious and comfortable accommodation, featuring a bright I-shape living area, a fitted kitchen complete with fridge freezer, washing machine and integrated cooker and hob. The two generously sized double bedrooms are located to the rear of the building. The apartment is located on the ground floor with a private entrance making it suitable for tenants of all mobility levels.

Externally, the property includes allocated parking for two cars. Situated in a quiet residential location, it enjoys the charm of village living while remaining conveniently positioned for access to Dorchester and surrounding areas.

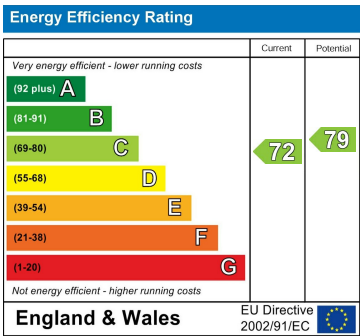
The village has a rich literary heritage and beautiful traditional architecture, including the historic Ford Cottage, its location in the Dorset countryside offers beautiful landscapes and a sense of literary history.

The property is available now for viewings, contact the team today to apply.

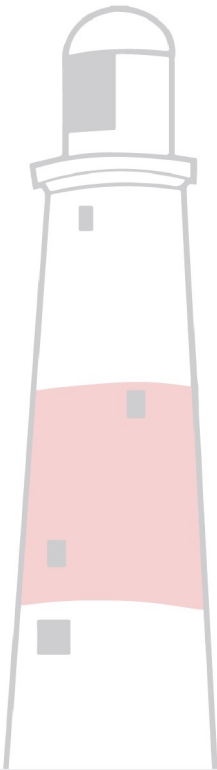
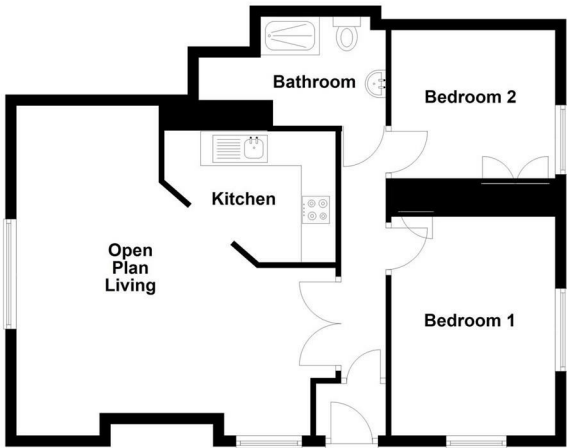
Area Map



Energy Efficiency Graph



Floor Plans



These particulars, whilst believed to be accurate are set out as a general outline only for guidance and do not constitute any part of an offer or contract. Intending purchasers should not rely on them as statements of representation of fact, but must satisfy themselves by inspection or otherwise as to their accuracy. No person in this firms employment has the authority to make or give any representation or warranty in respect of the property.

12 Easton Street, Portland, Dorset DT5 1BT